



ARSLANLAR ENDÜSTRİ MALZEMELERİ  
SAN. ve DIŞ.TİC. LTD.ŞTİ.

ÜRÜN KATALOĞU

[www.arslanlarendustri.com](http://www.arslanlarendustri.com)

## ABOUT US

ARSLANLAR INDUSTRY MATERIALS AND FOREIGN TRADE LIMITED COMPANY, established in Istanbul with our 20 years of experience , commercial started its life in industry, industrial, mechanical and purchased by selling the mechatronic material group He started his business life with various dealerships.

Thanks to its principled sales policy, at the same time, it exposes itself to other companies with which it has relationships. Has been accepted, is getting stronger day by day and its product ARSLANLAR INDUSTRY expands its sales range, sales and marketing under the brands it produces sales and marketing policies has accelerated. New work friends, brand, model with its products and machines and with Ar - Ge investments continue sales it does.

For Regards.



# CONTENTS

|   |         |
|---|---------|
| VALVES  | 1-3     |
| CHECK VALVES  | 4       |
| COMPENSATORS  | 5-6     |
| LEVEL INDICATORS  | 7       |
| STEAM TRAPS   | 8       |
| AIR - DIRT - SEDIMENT SEPARATIONS & WATER METER                   | 9       |
| HYDRAULIC CONTROL VALVES  | 10      |
| VALVE AND BRASS GROUP PRODUCTS                                    | 11      |
| SSV REG. COMPACT, MECHANICAL AND SOLENOID GROUP                   | 12      |
| SOLENOID VALVES and SLUM SHUT                                     | 13      |
| GAS ALARM DEVICES and ELECTRONIC EARTHQUAKE VALVE                 | 14      |
| PE80 SDR11 NATURAL GAS PIPE & PE100 SDR11/17 WATER PIPE           | 15      |
| PE EF / SP POLYETHYLENE FITTINGS                                  | 16      |
| S700 / CES200 / S300 SERVICE BOXES AND SETS                       | 17      |
| LIQUID SEALING ELM. - D.GAS PASTE -KILINGRIT                      | 18      |
| GASKETS AND CLAMPS  | 18      |
| COMBI, RADIATOR AND VALVE GROUP                                   | 19      |
| RMS-A / RMS-B / RMS-C TYPE STATIONS                               | 20      |
| BOOSTER / SUBMERSIBLE PUMP /<br>CIRCULATION PUMP / EXPANSION TANK | 21      |
| FIRE PUMP   | 22      |
| FIRE GROUP  | 23-26   |
| FIRE CABINETS   | 27-29   |
| FIRE GROUP GROOVED MATERIALS                                      | 30      |
| VALVE INSULATION JACKETS  | 31-32   |
| VENTILATION SYSTEM  | 33-34   |
| CONDENSING BOILER / BOILER / WATER TANK / HEAT EXCHANGER          | 35      |
| THREADED FITTINGS MATERIALS                                       | 36      |
| PPRC PLASTIC MATERIALS  | 37 - 38 |
| PVC PIMAS MATERIALS   | 39      |
| U-PVC SLEEVE & THREAD MATERIALS                                   | 40      |



### Ball Valve Full Bore

|                       |                                       |
|-----------------------|---------------------------------------|
| Dimensions            | F4 (DN40 - DN100)<br>F5 (DN125-DN200) |
| Body                  | GG-25 Pk Casting                      |
| Sphere                | 1.4301 / ç1040                        |
| Sealing Elements      | PTFE                                  |
| Design Pressure       | PN 10/16                              |
| Operating Temperature | (-10/+180°C)                          |

#### Nominal Diameter

DN40  
DN50  
DN65  
DN80  
DN100  
DN125  
DN150  
DN200



### Ball Valve Full Bore (Two Piece)

|                       |                                       |
|-----------------------|---------------------------------------|
| Dimensions            | F4 (DN40 - DN100)<br>F5 (DN125-DN200) |
| Body                  | GG-25 Pk Casting                      |
| Sphere                | 1.4301 / ç1040                        |
| Sealing Elements      | PTFE                                  |
| Design Pressure       | PN 6                                  |
| Operating Temperature | (-10/+180°C)                          |

#### Nominal Diameter

DN40  
DN50  
DN65  
DN80  
DN100  
DN125  
DN150



### Ball Valve Full Bore (Sfero Casting Two Piece)

|                       |                                       |
|-----------------------|---------------------------------------|
| Dimensions            | F4 (DN40 - DN100)<br>F5 (DN125-DN200) |
| Body                  | GGG - 40.3<br>Casting SFERO           |
| Sphere                | 1.4301 / ç1040                        |
| Sealing Elements      | PTFE (Teflon)                         |
| Design Pressure       | PN 16 (OPS PN25 /PN40)                |
| Operating Temperature | (-10/+180°C)                          |

#### Nominal Diameter

DN40  
DN50  
DN65  
DN80  
DN100  
DN125  
DN150  
DN200



### Natural Gas Ball Valve

|                  |                        |
|------------------|------------------------|
| Body             | GGG-40.3 SFERO Casting |
| Sphere           | Saintless Steel        |
| Sealing Elements | PTFE (Teflon)          |
| Design Pressure  | PN 16/40               |

#### Nominal Diameter

DN40  
DN50  
DN65  
DN80  
DN100



### Natural Gas Ball Valve

|                       |                        |
|-----------------------|------------------------|
| Dimensions            | GGG-40.3 SFERO Casting |
| Sphere                | Saintless Steel        |
| Sealing Elements      | PTFE (Teflon)          |
| Design Pressure       | PN 16/25               |
| Operating Temperature | (-10/+180°C)           |

#### Nominal Diameter

DN125  
DN150  
DN200



### Natural Gas Ball Gear Valve PN16/40

|                       |                        |
|-----------------------|------------------------|
| Dimensions            | GGG-40.3 SFERO Casting |
| Sphere                | Saintless Steel        |
| Sealing Elements      | PTFE (Teflon)          |
| Design Pressure       | PN 16/25               |
| Operating Temperature | (-10/+180°C)           |



**Printed Glob Valve**

GV-16k

|                |                         |
|----------------|-------------------------|
| Body & Cover   | GG-25 Pik Casting       |
| Sit            | AISI 420 Sainless Steel |
| Disk           | AISI 420 Sainless Steel |
| Link           | Flanged                 |
| Max Opr. Temp. | 250 °C                  |
| Max Opr. Pres. | 16 Bar                  |



**Piston Glob Valve**

|                |                                 |
|----------------|---------------------------------|
| Body & Cover   | GG-25 Pik Casting               |
| Piston         | 1.4104 Sainless Steel           |
| Valve Ring     | AISI 304 Sainless Steel+ Grafit |
| Link           | Flanged                         |
| Max Opr. Temp. | 200 °C                          |
| Max Opr. Pres. | 16 Bar                          |



**Metal Seat Gate Valve**

|                  |   |
|------------------|---|
| Body             | GG-25 Pik Casting                       |
| Slide            | (DN40- DN100) MS58, (DN125-DN600) GG-25 |
| Lid              | GG-25 Pik Casting                       |
| Cover Gasket     | EPDM                                    |
| Opr. Temperature | (-10 / +120 °C)                         |
| Opr. Pressure    | 10 / 16 BAR                             |



**Gate Valve With Elastomer Seat**

|                  |                    |
|------------------|--------------------|
| Body             | GG -25 Pik Casting |
| Slide            | GGG-50-50 + EPDM   |
| Lid              | GG-25 Pik Casting  |
| Cover Gasket     | EPDM               |
| Opr. Temperature | (-10 / +90 °C)     |
| Opr. Pressure    | 10 / 16 BAR        |



**Lug Type Butterfly Valve  
(Nickel Valve)**

**BODY** GG-25 Pik Casting  
**FLAP** GGG - 40.3 + Nickel Plated  
**GASKET** EPDM  
**Opr. Temperature** (-10 / +110°C)  
**Opr. Pressure** PN16

**Nominal  
Diameter**

DN40  
DN50  
DN65  
DN80  
DN100  
DN125  
DN150  
DN200  
DN250  
DN300



**Lug Type Butterfly Valve  
(Stainless Flap)**

**BODY** GG-25 Pik Casting  
**FLAP** SAINTLESS STEEL  
**GASKET** EPDM  
**Opr. Temperature** (-10 / +110°C)  
**Opr. Pressure** PN16

**Nominal  
Diameter**

DN40  
DN50  
DN65  
DN80  
DN100  
DN125  
DN150  
DN200  
DN250  
DN300



**Water Type Butterfly Valve  
(Nickel Flap)**

**BODY** GG-25 Pik Casting  
**FLAP** GGG - 40.3 + Nickel Plated  
**GASKET** EPDM  
**Opr. Temperature** (-10 / +110°C)  
**Opr. Pressure** PN16

**Nominal  
Diameter**

DN40  
DN50  
DN65  
DN80  
DN100  
DN125  
DN150  
DN200  
DN250  
DN300



**Water Type Butterfly Valve  
(Stainless Flap)**

**BODY** GG-25 Pik Casting  
**FLAP** SAINTLESS STEEL  
**GASKET** EPDM  
**Opr. Temperature** (-10 / +110°C)  
**Opr. Pressure** PN16

**Nominal  
Diameter**

DN40  
DN50  
DN65  
DN80  
DN100  
DN125  
DN150  
DN200  
DN250  
DN300



## Disco Check Valve (Brass)

BODY MS 58  
SPRING DISC SEGMENT Stainless Steel  
OPR. TEMPERATURE 250 °C  
OPR. PRESSURE PN16

### Nominal Diameter

DN15  
DN20  
DN25  
DN32  
DN40  
DN50  
DN65  
DN80  
DN100



## Disco Check Valve (Stainless)

BODY AISI 304-316 Stainless Steel  
SPRING DISC SEGMENT Stainless Steel  
OPR. TEMPERATURE 300 °C  
OPR. PRESSURE PN40

### Nominal Diameter

DN15  
DN20  
DN25  
DN32  
DN40  
DN50  
DN65  
DN80  
DN100



## Disco Check Valve (Carbon Steel)

BODY & DISK Carbon Steel  
ARC SEGMENT Stainless Steel  
OPR. TEMPERATURE 250 °C  
OPR. PRESSURE PN40

### Nominal Diameter

DN40  
DN50  
DN65  
DN80  
DN100



## Disco Check Valve (GG-25 Cast Iron)

BODY & DISK GG-25 Pisk Casting  
ARC SEGMENT Stainless Steel  
OPR. TEMPERATURE 250 °C  
OPR. PRESSURE PN16

### Nominal Diameter

DN125  
DN150  
DN200



## Wafer Shaker Check Valve (Pik Casting)

BODY Carbon Steel  
O' RING EPDM  
OPR. TEMPERATURE 100 °C  
OPR. PRESSURE PN16

### Nominal Diameter

DN40  
DN50  
DN65  
DN80  
DN100  
DN125  
DN150  
DN200  
DN250  
DN300



## Wafer Shaker Check Valve (Stainless Steel)

BODY Carbon Steel  
O' RING EPDM  
OPR. TEMPERATURE 100 °C  
OPR. PRESSURE PN16

### Nominal Diameter

DN40  
DN50  
DN65  
DN80  
DN100  
DN125  
DN150  
DN200  
DN250  
DN300



## Casting Flanged Swing Check Valve

BODY GG-25 Pisk Casting  
DRAIN COVER GG-25 Pisk Casting  
OPR. TEMPERATURE (-10 / +180 °C)  
OPR. PRESSURE PN16

### Nominal Diameter

DN40  
DN50  
DN65  
DN80  
DN100  
DN125  
DN150  
DN200  
DN250  
DN300



## Strainer

BODY GG-25 Pisk Casting (DN40 - DN300)  
ST 37.2 Carbon Steel (DN400 - DN1000)  
FILTER Stainless Steel  
OPR. TEMPERATURE (-10 / +180 °C)  
OPR. PRESSURE PN16

### Nominal Diameter

DN40  
DN50  
DN65  
DN80  
DN100  
DN125  
DN150  
DN200  
DN250  
DN300  
DN400  
DN500  
DN600  
DN700  
DN800  
DN1000

# COMPENSATOR - Axial Metal Bellows & Vibration Absorber



## Axial Metal Bellow Expansion Compensator/ Fixed Flange



**Bellows & Liner Material** Stainless Steel  
**Flange Material** St.37.2 Carbon Steel  
**Design Pressure** 16 Bar  
**Opr. Temperature** -80 / +427 °C

## Axial Metal Bellow Expansion Compensator / Rotary Flange



**Bellows & Liner Material** Stainless Steel  
**Flange Material** St.37.2 Carbon Steel  
**Design Pressure** 16 Bar  
**Opr. Temperature** -80 / +427 °C

## Axial Metal Bellow Expansion Compensator / Welding Neck



**Bellows & Liner Material** Stainless Steel  
**Flange Material** St.37.2 Carbon Steel  
**Design Pressure** 16 Bar  
**Opr. Temperature** -80 / +427 °C

## Vibration Absorber Rubber Compensator



**Rubber Material** EPDM  
**Nylon Wrap Fibers** Synthetic Fiber  
**Steel Wire** Carbon Steel  
**Flange Material** GGG 40.3 Sfero Casting / St.37  
**Flange Pressure Class** PN 16  
**Compressive Strength** 10 Bar  
**Temperature Resistance** 90 °C

## Vibration Absorber Metal Compensator



**Bellows Material** Stainless Steel  
**Connection** Swivel Flange  
**Flanges** St. 37 Carbon Steel  
**Design Pressure** 16 Bar  
**Operating Temperature** -80 / +427 °C  
**Limit Rods** St. 37 Carbon Steel

## Vibration Absorber Rubber Compensator



**Rubber Material** Special Synthetic  
**Strengthening Knit** Nylon Based  
**Titles** Cast Iron  
**Compressive Strength** 10 Bar  
**Temperature Resistance** 90 °C

## Dilatation and Earthquake (Seismic) Expansion Compensator / Flanged



|                       |                         |
|-----------------------|-------------------------|
| Bellows Material      | Sainless Steel          |
| Connection            | Fixed and Rotary Flange |
| Connection Material   | St. 37.2 Carbon Steel   |
| Joint Material        | St. 37.2 Carbon Steel   |
| Design Pressure       | 12 Bar                  |
| Operating Temperature | -80 / +427 °C           |

## Dilatation and Earthquake (Seismic) Expansion Compensator / Welded Neck & Grooved Connection



|                       |                                  |
|-----------------------|----------------------------------|
| Bellows Material      | Sainless Steel                   |
| Connection            | Welded Neck / Grooved Connection |
| Connection Material   | St. 37.2 Carbon Steel            |
| Joint Material        | St. 37.2 Carbon Steel            |
| Design Pressure       | 12 Bar                           |
| Operating Temperature | -80 / +427 °C                    |

## External Pressure Expansion Compensator / Flanged



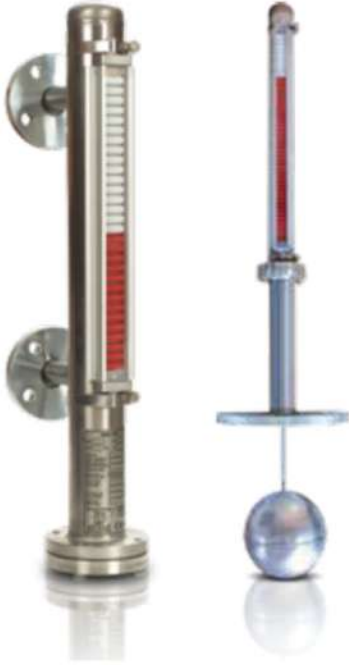
|                       |                         |
|-----------------------|-------------------------|
| Bellows Material      | Sainless Steel          |
| Inner, Outer Pipe     | St. 37.2 Carbon Steel   |
| Connection            | Fixed and Rotary Flange |
| Joint Material        | St. 37.2 Carbon Steel   |
| Design Pressure       | 12 Bar                  |
| Operating Temperature | -80 / +427 °C           |

## External Pressure Expansion Compensator / Welding Pipe



|                       |                       |
|-----------------------|-----------------------|
| Bellows Material      | Sainless Steel        |
| Inner, Outer Pipe     | St. 37.2 Carbon Steel |
| Connection            | Weld Neck             |
| Joint Material        | St. 37.2 Carbon Steel |
| Design Pressure       | 12 Bar                |
| Operating Temperature | -80 / +427 °C         |

## Magnetic Level Indicator



|                     |   |
|---------------------|---|
| Pipe and Float      | Saintless Steel                                   |
| Magnetic Disc       | Plastic   |
| Connection          | DN20 PN16 Flanged                                 |
| Pressure Class      | PN16 (Optional PN25-PN40)                         |
| Flange              | St. 37.2 Carbon Steel (Optional Saitinless Steel) |
| Max Operating Temp. | 160 °C  |

## Proportional Level Indicator and Controller



|                     |                             |
|---------------------|-----------------------------|
| Pipe and Float      | Saintless Steel             |
| Magnetic Disc       | Plastic (Optional Aluminum) |
| Proportional Bar    | AISI 304 Saitinless Steel   |
| Connection          | DN20 PN16 Flanged           |
| Pressure Class      | PN16                        |
| Flange              | St. 37.2 Carbon Steel       |
| Max Operating Temp. | 160 °C ( Optional 200 °C )  |

## Level Switch



## Boiler Tagging Device



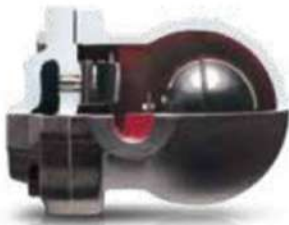
## Level Tank Buoy



## AK-100 Flow Control Switch



## Float Trap / Thermostatic Air Release



**Body and Cover** GGG40.3 Sfero Casting  
**Inner Gear and Float** Sainless Steel  
**Operating Pressure** 4.5 / 10 / 14 Bar  
**Pressure Class** 16 Bar  
**Max Operating Temp.** 250 °C

## From Liquid Circuits Air Thrower

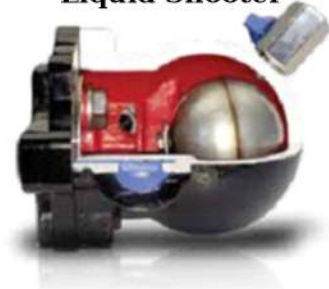


## Reverse Sleeve Steam Trap

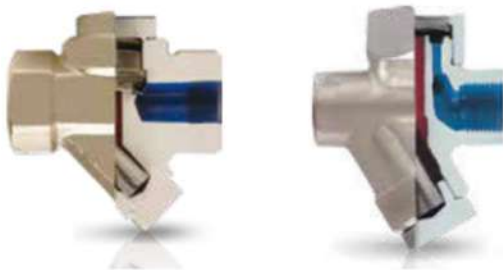


**Body and Cover** GGG40.3 Sfero Casting  
**Inner Gear and Float** Sainless Steel  
**Operating Pressure** 5.4 / 8.5 / 15.5 Bar  
**Pressure Class** 16 Bar  
**Max Operating Temp.** 220 °C

## From Air Circuits Liquid Shooter



## Thermodynamic Steam Trap



**Body** Forged Steel  
**Cap** Transmission Steel  
**Stainer , Disk , Sit** Sainless Steel  
**Max. Operating Pres.** 40 Bar  
**Max. Operating Tem.** 400 °C  
**Min. Operating Pres.** 0.7 Bar

**Body** Sainless Steel  
**Cap** Sainless Steel  
**Stainer , Disk , Sit** Sainless Steel  
**Max. Operating Pres.** 40 Bar  
**Max. Operating Tem.** 400 °C  
**Min. Operating Pres.** 0.7 Bar

## Direct Acting Pressure Reducer



### Air Separator



Body St. 37.2 Carbon Steel  
Air Separator AISI 304 Sainless Steel  
Max. Operating Pres. 10 Bar  
Max. Operating Tem. 100 °C  
Connection Type Gears / Flanged

### Sediment & Dirt Separator



Body St. 37.2 Carbon Steel  
Air Separator AISI 304 Sainless Steel  
Max. Operating Pres. 10 Bar  
Max. Operating Tem. 100 °C  
Connection Type Gears / Flanged

### Balance Cup



Body St. 37.2 Carbon Steel  
Max. Operating Pres. 10 Bar  
Max. Operating Tem. 110 °C  
Connection Type Gears / Flanged

### Air Tank



Body St. 37.2 Carbon Steel  
Product Diameter 1/2"  
Max. Operating Pres. 10 Bar  
Max. Operating Tem. 100 °C  
Connection Type Gears

### Flanged Cold Water Meter



### Cold Water Meter



**Pressure Reducer  
Control Valve**



**Solenoid Controlled Pressure  
Reducing Valve**



**Opening & Closing Valve /  
Solenoid Controlled**



**Pressure Sustaining and  
Pressure Reducing Control Valve**



**Level Control Valve / Electric  
Floater**



|                       |                                      |
|-----------------------|--------------------------------------|
| Body                  | : GG-25 Pik Casting                  |
| Diaphragm             | : Cord Reinforced Natural Rubber cap |
| Diaphragm Thrust Ring | : GG-25 Pik Casting                  |
| Sagittarius           | : Polyamid                           |
| Max. Operating Pres.  | : SST 302                            |
| Max. Operating Temp.  | : 16 bar                             |
| Connection Type       | : 80 C                               |
| Pressure Drop Rate    | : Flanged                            |
|                       | : 10:1                               |

## Ball Valve / Brass - Water



|                  |                       |
|------------------|-----------------------|
| Body and Lid     | : Ni Clad Brass       |
| Sphere           | : Chromium Clad Brass |
| Gasket           | : PTFE                |
| Connection       | : Gears               |
| Maks. Opr. Temp. | : 110 °C              |
| Pressure Class   | : PN16-25             |

## Ball Valve / Brass - N.Gas



|                  |                       |
|------------------|-----------------------|
| Body and Lid     | : Ni Clad Brass       |
| Sphere           | : Chromium Clad Brass |
| Gasket           | : PTFE                |
| Connection       | : Gears               |
| Maks. Opr. Temp. | : 110 °C              |
| Pressure Class   | : PN16-25             |

## Check Valve / Spring Loaded / Brass



|                  |                   |
|------------------|-------------------|
| Body             | : Ms 58 Brass     |
| Gasket           | : NBR             |
| Flap Spring      | : Stainless Steel |
| Pressure Class   | : PN 16           |
| Maks. Opr. Temp. | : 110 °C          |

## Check Valve Shaker Brass



|                  |                   |
|------------------|-------------------|
| Body             | : Ms 58 Brass     |
| Gasket           | : NBR             |
| Flap Spring      | : Stainless Steel |
| Pressure Class   | : PN 16           |
| Maks. Opr. Temp. | : 110 °C          |

## Strainer / Brass



|                  |                   |
|------------------|-------------------|
| Body             | : Ms 58 Brass     |
| Gasket           | : NBR             |
| Flap Spring      | : Stainless Steel |
| Pressure Class   | : PN 16           |
| Maks. Opr. Temp. | : 110 °C          |

## Pneumatic Piston Valve / On-Off



|                           |                         |
|---------------------------|-------------------------|
| Body                      | : AISI 316 Saint. Steel |
| Connection                | : Gear                  |
| Gasket                    | : PTFE                  |
| Maks. Opr. Temp.          | : 180 °C                |
| Pressure Class            | : PN16                  |
| Air Supply Pressure Range | : 3-8 bar               |

## Pressure Reducing Valve



|                        |                   |
|------------------------|-------------------|
| Body                   | : Ni Kaplı Pirinç |
| Internal Metal Parts   | : Pirinç          |
| Gasket                 | : NBR             |
| Pressure Class         | : PN16            |
| Max. Operating temp.   | : 90°C            |
| Max. Inlet Pressure    | : 25 bar          |
| Setting Pressure Range | : 0,1-6 bar       |
| Factory settings       | : 3 bar           |

## Safety Valve / Brass



|                     |                 |
|---------------------|-----------------|
| Body                | : Ni Clad Brass |
| St Material         | : EPDM          |
| Adjustable Pressure | : 0-12 bar      |
| Maks. Opr. Temp.    | : 130 °C        |
| Nominal Pressure    | : PN 16         |

**Compact Regulator with  
Safety Shutoff**



**Safety Shutdown SSV  
Regulator**



**HP100 SSV Box  
Regulator**



**Aluminum Solenoid  
Valve**



**Aluminum Compact  
Solenoid Valve**



**Flanged Aluminum Solenoid  
Valve**



**Gear Mechanical  
Earthquake Valve**



**Flanged Mechanical  
Earthquake Valve**



### Slam Shut Safety Shutdown



### M16 Compact Solenoid Valve



### Solid Brass Body Solenoid Valve



### Relief Valf



### Flanged SSV Regulator



### Fixed Flange Filter



### Full Exproof Casting



### Aluminum Body Solenoid Valve



# GAS ALARM DEVICES & ELECTRONIC EARTHQUAKE VALVE

**Exproof Gas Alarm Device / GB**



**Gas Alarm Device / STD**



**Exproof Gas Alarm Device / GB**



**İTEK TAMMY-2 Earthquake Device**



**İTEK TAMMY-3 Earthquake Device With LED Display**



**Electronic Earthquake Device 12V(Housing)**



**NoFire Earthquake Detection**



**Electronic Earthquake Device 220V (Elevator)**



# PE80 SDR11 DIGITAL GAS PIPE & PE100 SDR11/17 WATER PIPE

**PE100 SDR11/17 WATER PIPE**



**PE80 SDR11 NATUREL GAS PIPE**



**PE EF Sleeve**



**PE EF Elbow/ 90C**



**PE EF Cap**



**PE EF Equal Tee**



**PE Steel Transition Adapter  
External Thread**



**PE Steel Transition Welded**



**PE EF Saddle**



**PE SP Elbow / 90C**



**PE SP Equal Tee**



**PE Coated Flange Adapter**



**PE Flange Adapter**



**PE SP Reduction**



**PE SP Cap**



**PE SP Equal Tee / 45C**



**PE Polycode Electrofusion  
Welding Machine**



**PE Pipe Scraper**



**PE Pipe Cutter 20/42 - 42/63**



# S700 / CES200 / S300 SERVİS BOX & SETS



**S700 Service Box**



**CES200 Service Box**



**S300 Service Box**



**Villa Type Metered  
Service Box Set**



**C250 SGH Manhole Cover**



**D400 Manhole Cover**



**Nut Clamp**



**Head Heavy Duty Clamp**



**Heavy Load Clamp**



**Double Clamp**



**Triphone Clamp / Short & Long**



**Steel Fastening Dowel**



**FX11 Solvent Cleaning Wipes**



**Klingrit Gasket**



**Liquid Sealing**



**Natural Gas Paste**



**Combi Boiler**



**Radiator / Comb**



**Thermostatic Valve**



**Corner Radiator Valve**



**PX Corner Radiator Valve**



**New Type Test Nipple with Oring Seal**



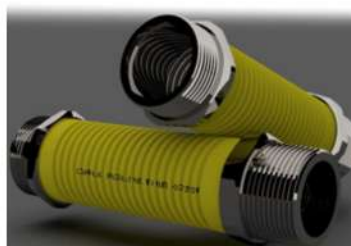
**Combi Flex**



**Hob Flex**



**Box Flex**



**G4-6 Counter Flex / Console / Record**



**RMS-C**



**RMS-C**



**4-300 / 500m3 S300  
Kutu Set**



**RMS-C**



**RMS-A**



## Complete Stainless Steel Hydrophore Systems



### Usage areas:

Requiring high pressure water supply;

- Apartment etc. high-rise building applications.
- Ultra filtration, reverse osmosis etc. purification systems requiring pressurized water.
- Washing, cleaning processes, fire fighting, etc. industrial systems.



## Drainage Pump

- They are pumps with open impellers and stainless steel filters, ideal for discharging slightly polluted water containing particles up to 6 mm. We recommend that it be used with an appropriate protection control panel and ball type check valve.



## Drainage Pump with Shredder Blade

- These are pumps designed for the transfer of waste and septic water containing solid particles (paper, textile pieces, plastic additive waste, etc.) and discharge the solid particles smoothly thanks to the shredding blade system. We recommend that they be used with an appropriate protection control panel and bulk type check valve.

## Recirculation Pump



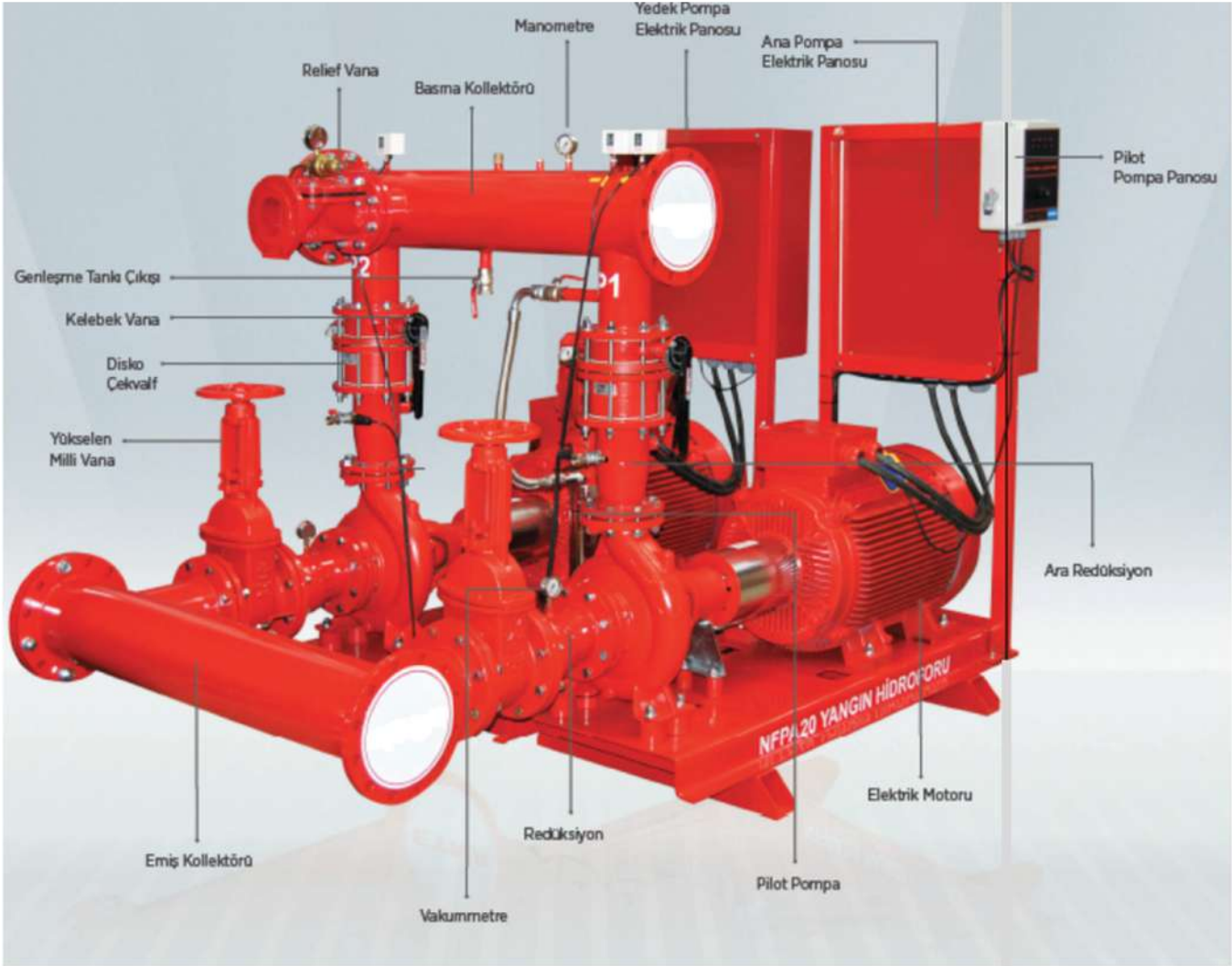
- They are high-efficiency wet rotor circulation pumps with a new generation permanent magnet motor and integrated frequency converter.
- Usage areas;
- Hot tap water is used in hot and cold water systems, including geothermal and solar systems.

## Expansion Tank



- It is used directly integrated into the product in small capacity devices such as booster tanks, combi boilers and floor heaters. Expansion tanks, large or small, are used to absorb the pressure created by the expanding fluid in every system they are used in.

## Fire Pump Detail Compliant with NFPA 20 Standard



Fire pump systems complying with the NFPA 20 standard are approved by the American Fire Fighting Association (NFPA). It is designed and produced according to the requirements of standard number 20. Meets NFPA 20 standard Main features of fire pumps;

- Modular production with electric or diesel driven engines is made.
- EA series end suction centrifugal pumps are used.
- In the selected pump; At 150% capacity, hydraulic efficiency will not fall below 65% of the nominal pressure.
- The pump closed valve value (at zero flow) is selected so that it does not exceed 140% of the nominal pressure.
- It is designed/manufactured so that the speed in the suction and discharge collectors does not exceed 3 m/s.
- The pump body is made of GG25 (cast iron), the pump fan is made of bronze material, and the sealing is 5 rows. It is provided with mechanical or soft shaft seal.

## Butterfly Valve with Monitoring Switch



|                      |                            |
|----------------------|----------------------------|
| Max. Operating Pres. | 300 PSI ( 20.7 bar )       |
| Max. Test Pres.      | 600 PSI ( 41.4 bar )       |
| Operating Temp.      | 80 C                       |
| Body                 | Sfero Casting              |
| Flap                 | EPDM Covered Sfero Casting |
| Mil                  | Saintless Steel            |
| Tracking Key         | Oven Painted Sfero Casting |

## Butterfly Valve / Gear With Monitoring Switch



|                      |                            |
|----------------------|----------------------------|
| Max. Operating Pres. | 300 PSI ( 20.68 bar )      |
| Max. Test Pres.      | 600 PSI ( 41.36 bar )      |
| Operating Temp.      | 80 C                       |
| Body                 | Sfero Casting              |
| Flap                 | EPDM Covered Sfero Casting |
| Mil                  | Saintless Steel            |
| Tracking Key         | Oven Painted Sfero Casting |

## Flow Switch



|                      |                        |
|----------------------|------------------------|
| Max. Operating Pres. | : 300 PSI ( 20.68 bar) |
| Max. Operating Temp. | : 80 C                 |

## Test And Drain Valve / Gear



|                      |                      |
|----------------------|----------------------|
| Body                 | : Brass              |
| Sphere               | : Brass              |
| Connection           | : NPT Gears          |
| Max. Operating Pres. | : 300 PSI (20.7 bar) |

**Sprinkler / Upright**



**Sprinkler / Pendent**



**Sprinkler / Concealed / Pendent**



**OS&Y Rising Stem Gate Valve / Gear**

Max. Operating Pres. : 175 PSI  
Operating Temp. : 80 C  
Body, Cover : ASTM B62 Bronze  
Connection : Dişli  
Mil : ASTM B371 Bronze  
Gasket : Asbestos-Free Klingrite



**Relief Valve / Gear**

Body, Cover : Bronze Casting ASTM B62  
Trim : Brass and 303 Saintless Steel  
Body Pressure : 300 PSI ( 20,68 bar )  
Pressure Setting Range : 20-200 PSI ( 1,4-14 bar )



**Relief Valve / Flanged**

Operating Pres. : 300 PSI (20,68 bar)  
Operating Temp. : 80C  
Setting Range : 20-200 PSI (1,4-14 bar)  
Body : Iron Casting  
Connection : ANSI300 lb Flanşlı



**Pressure Reducing Valve / Grooved**

Operating Pres. : 300 PSI (20,68 bar)  
Operating Temp. : 80C  
Setting Range : 30-165 PSI (2,0-11,3 bar)  
Body : Iron Casting  
Connection : Grooved

**Fire Brigade Connection Port**



**Fire Department Connection Valve**



## Wet Alarm Valve System



Max. Operating Pres. 250 PSI  
Max. Operating Temp. 80 C  
Connection Flanged / Grooved

## Flow Meter



Max. Operating Pres. : 500 PSI (34.48 bar)  
Max. Operating Temp. : 80 C  
Connection : Welded / Grooved Connection  
Body : Carbon Steel

## OS&Y Rising Stem Gate Valve



## NRS Non-Rising Stem Gate Valve



|                      |                          |
|----------------------|--------------------------|
| Max. Operating Pres. | : 300 PSI                |
| Max. Operating Temp. | : 80 C                   |
| Body                 | : Iron Casting           |
| Slide                | : Cr-Ni Coated Bronze    |
| Mil                  | : Brass & Sainless Steel |
| Volan                | : Sfero Casting          |

|                      |                          |
|----------------------|--------------------------|
| Max. Operating Pres. | : 300 PSI                |
| Max. Operating Temp. | : 80 C                   |
| Body                 | : Iron Casting           |
| Slide                | : Cr-Ni Coated Iron      |
| Mil                  | : Brass & Sainless Steel |
| Post İnd. Connection | : Sfero Casting          |

## Indicators / Horizontal & Vertical

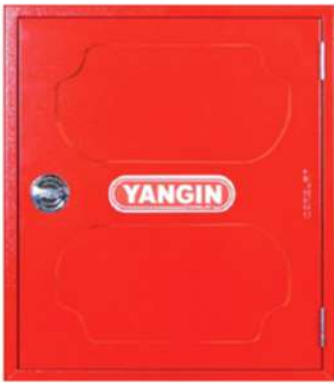


|                  |                     |
|------------------|---------------------|
| Body             | : GG-25 Pik Casting |
| Motion Shaft     | : Sainless Steel    |
| Slide Gasket     | : EPDM              |
| Nominal Diameter | : DN 100            |
| Pressure Class   | : PN 16             |
| Elbow Mat.       | : GG-25 Pik Casting |

## Fire Hydrant



|                  |                     |
|------------------|---------------------|
| Body             | : GG-25 Pik Casting |
| Motion Shaft     | : Sainless Steel    |
| Slide Gasket     | : EPDM              |
| Nominal Diameter | : DN 100            |
| Pressure Class   | : PN 16             |
| Elbow Mat.       | : GG-25 Pik Casting |



## CABINET FEATURES

- Fire cabinet with 1" rubber hose with right or left top or bottom inlet.
- 1" 20 - 25 - 30 meters semi-rigid rubber hose conforming to TS EN 694.
- 1" Ball valve or optionally 2" German valve in accordance with TS EN 12259 Aluminum valve (with 2" to 1" adapter).
- 1" 3 position jet spray nozzle.
- Fire cabinet 70 micron ral 3001 (or in desired color)It is electrostatic powder painted.
- Fire cabinet is TS EN 671-1 and CE certified.
- Hose reel that can rotate 90 + 270 degrees.
- Spool Max. Working Pressure: 12 BAR (1.2 Mpa) Test Pressure: 18 Bar(1.8 Mpa) Minimum Explosion Pressure: 30 Bar (3.0 Mpa)





## CABINET FEATURES

- Fire cabinet with right or left top or bottom inlet and 1" rubber hose.
  - 1" 20 - 25 - 30 meters semi-rigid rubber hose conforming to TS EN 694.
  - 1" Ball valve or optionally 2" German Aluminum valve conforming to TS EN 12259 (with 2" to 1" adapter).
  - 1" 3 position jet spray nozzle. • Fire cabinet is TS EN 671-1 and CE certified.
  - Hose reel that can rotate 90 + 270 degrees. • Spool Max.
- Working Pressure: 12 BAR (1.2 Mpa) Test Pressure: 18 Bar (1.8 Mpa) Minimum Explosion Pressure: 30 Bar (3.0 Mpa).**



**Sahara Type Cabinet (Single)**



**Tube Cabinet**



**Sahara Type Cabinet (Double)**



**Rubber Trolley Hose Reel**



**Fire Extinguisher ABC Dusty**



**6 KG**

**12 KG**

**50 KG**

**Rigid Coupling**



**Flexible Coupling**



**Grooved Elbow**



**Straight T Elbow**



**Mechanical T Elbow**



**Concentric Reduction / Gear**



**Cap**



**Flange Adapter**



**Grooved Mechanical T**



**Gear Mechanical T**



**Concentric Reduction / Grooved**



**Cross T Elbow**





## Technical Specifications

|                            |   |
|----------------------------|---|
| Interior Fabric            | 100gr/m <sup>2</sup> Silicone Coated Glass Fiber Fabric/Ceramic |
| Outer Fabric               | 100gr/m <sup>2</sup> Silicone Coated Glass Fiber Fabric/Ceramic |
| Stitch Type                | Heat Resistant Kevlar Rope                                      |
| Insulation                 | Rabitz Wire Mattress Rockwool / Ceramic Blanket                 |
| Choke Rope                 | Glass Fiber Reinforced Rope                                     |
| OperatingTemp.             | -20 / +1200 C   |
| Thermal Con. Floor Counter | 0,44W/ m.k(0C0) / 0,1W/m.k(0C0)                                 |



**Valve Jacket:** It is an insulation system that is produced with a specially developed pillow system to save energy, and also maintains a healthy environment and occupational safety for workers, and is also very easy to install. Valve jacket supports the use of products produced with the latest technology and has become the most preferred insulation system at this time. It allows saving up to very high amounts of energy in valves on uninsulated hot lines.

## What are the Benefits of Valve Jacket?

It minimizes heat losses. Since it reduces the external surface temperature, it prevents possible burns and thus prevents work losses, as well as increasing occupational safety. Since it is easy to assemble, it is a system that can be easily disassembled and replaced. It does not require any knowledge to disassemble, it is quite easy. You will not have to pay the amount you paid for the insulation system again in the future because the valve jacket can easily amortize itself with long-term use. Thanks to its silicone-coated outer fabric, the valve jacket can be used easily in outdoor environments. It prevents liquids such as oil, liquid and fuel from damaging the insulation felt, thus preventing these adverse conditions easily.





|                                   |  |
|-----------------------------------|--|
| <b>Inner Fabric</b>               | : 100 gr/m2 Silicone Coated Glass Fiber Fabric |
| <b>Outer Fabric</b>               | : 100 gr/m2 Silicone Coated Glass Fiber Fabric |
| <b>Insulation</b>                 | : 50 mm 80gr/m3 Intensity Rabitz Wired         |
| <b>Sewing Thread</b>              | : Temperature Resistant Kevler String          |
| <b>Connection</b>                 | : Velcro Tape                                  |
| <b>Strangling Rope</b>            | : Glass Fiber Rope                             |
| <b>OperatingTemp.</b>             | : -20 / +200 C                                 |
| <b>Thermal Con. Floor Counter</b> | : 0,044W/mk (0C)                               |



**Air Duct**



**Flexible Aluminum Channel**



**Sailor Anemostat**



**Square Anemostat**



**Double Row Wing Grille**



**Single Row Wing Culvert**



**Square Comb Grille**



**Motorized Damper**



**Jet Fan**



**Aksiel Fan**



**Rooftop Fan**



**Duct Type Cell Fan**



**Jet Fan Automation Panel**



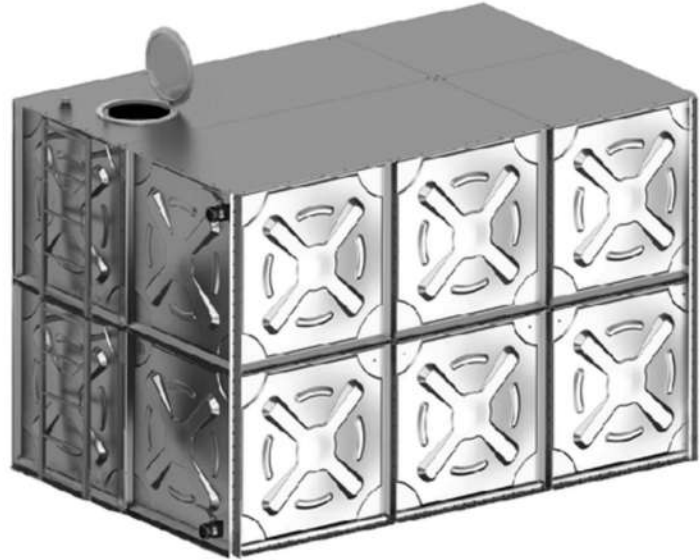
**Heat Recovery Device**



**Plate Heat Exchanger**



**Stainless and Galvanized Water Tank**



**Boiler**



**Wall Mounted Condensing Boiler**



# THREADED FITTINGS MATERIALS ( TRAKYA DÖKÜM )



**Elbow**



**Equal Tee**



**Nippel**



**Reduction**



**Tail Elbow**



**Cuff Reduction**



**Conical Record**



**Blind Plug**



**Cruise Tee**



**Threaded Pipe Part**



**Inegal Tee**



**Pipe Jump Cuff**



**Elbow '90**



**Elbow '45**



**Equal TE**



**Inegal TE**



**Sleeve**



**Reduction**



**Internal Thread Gland**



**External Thread Gland**



**External Thread Elbow**



**Internal Thread Elbow**



**Internal Thread Pivoting Head Union**



**External Thread Pivoting Head Union**



**PP-R Glass Fiber Reinforced Pipe - PN20 - SDR7,4**



**PP-R Standard Pipe - PN20 - SDR6**



**Internal Thread  
Equal TE**



**External Thread  
Equal TE**



**Straight Curve**



**Double Clamp**



**Single Clamp**



**Sleeve Curve**



**Internal Thread  
Battery**



**Threaded Blind  
Plug**



**Closing Head**



**Plastic Ball Valve**



**PVC Pipe**



**PVC Elbow '45**



**PVC Pipe '90**



**PVC Single Fork**



**PVC Tee Fork**



**PVC Double Fork**



**PVC Reduction**



**PVC 'S Siphon**



**PVC Blind Plug**



**PVC Clamp**



**U-PVC Elbow '90**



**U-PVC Elbow '45**



**U-PVC Pipe**



**U-PVC Coupling**



**U-PVC Reduction**



**U-PVC Equal TE**



**U-PVC Hose Record**



**U-PVC Nipple**



**U-PVC Inegal TE**



**U-PVC Valve**



**Tangit**





# 2026 Celender

## January

| MO | TU | WE | TH | FR | SA | SU |
|----|----|----|----|----|----|----|
| 1  | 2  | 3  | 4  | 5  | 6  | 7  |
| 8  | 9  | 10 | 11 | 12 | 13 | 14 |
| 15 | 16 | 17 | 18 | 19 | 20 | 21 |
| 22 | 23 | 24 | 25 | 26 | 27 | 28 |
| 29 | 30 | 31 | 1  | 2  | 3  | 4  |

## February

| MO | TU | WE | TH | FR | SA | SU |
|----|----|----|----|----|----|----|
| 29 | 30 | 31 | 1  | 2  | 3  | 4  |
| 5  | 6  | 7  | 8  | 9  | 10 | 11 |
| 12 | 13 | 14 | 15 | 16 | 17 | 18 |
| 19 | 20 | 21 | 22 | 23 | 24 | 25 |
| 26 | 27 | 28 | 29 | 1  | 2  | 3  |

## March

| MO | TU | WE | TH | FR | SA | SU |
|----|----|----|----|----|----|----|
| 26 | 27 | 28 | 29 | 1  | 2  | 3  |
| 4  | 5  | 6  | 7  | 8  | 9  | 10 |
| 11 | 12 | 13 | 14 | 15 | 16 | 17 |
| 18 | 19 | 20 | 21 | 22 | 23 | 24 |
| 25 | 26 | 27 | 28 | 29 | 30 | 31 |

## April

| MO | TU | WE | TH | FR | SA | SU |
|----|----|----|----|----|----|----|
| 1  | 2  | 3  | 4  | 5  | 6  | 7  |
| 8  | 9  | 10 | 11 | 12 | 13 | 14 |
| 15 | 16 | 17 | 18 | 19 | 20 | 21 |
| 22 | 23 | 24 | 25 | 26 | 27 | 28 |
| 29 | 30 | 1  | 2  | 3  | 4  | 5  |

## May

| MO | TU | WE | TH | FR | SA | SU |
|----|----|----|----|----|----|----|
| 29 | 30 | 1  | 2  | 3  | 4  | 5  |
| 6  | 7  | 8  | 9  | 10 | 11 | 12 |
| 13 | 14 | 15 | 16 | 17 | 18 | 19 |
| 20 | 21 | 22 | 23 | 24 | 25 | 26 |
| 27 | 28 | 29 | 30 | 31 | 1  | 2  |

## June

| MO | TU | WE | TH | FR | SA | SU |
|----|----|----|----|----|----|----|
| 27 | 28 | 29 | 30 | 31 | 1  | 2  |
| 3  | 4  | 5  | 6  | 7  | 8  | 9  |
| 10 | 11 | 12 | 13 | 14 | 15 | 16 |
| 17 | 18 | 19 | 20 | 21 | 22 | 23 |
| 24 | 25 | 26 | 27 | 28 | 29 | 30 |

## July

| MO | TU | WE | TH | FR | SA | SU |
|----|----|----|----|----|----|----|
| 1  | 2  | 3  | 4  | 5  | 6  | 7  |
| 8  | 9  | 10 | 11 | 12 | 13 | 14 |
| 15 | 16 | 17 | 18 | 19 | 20 | 21 |
| 22 | 23 | 24 | 25 | 26 | 27 | 28 |
| 29 | 30 | 31 | 1  | 2  | 3  | 4  |

## August

| MO | TU | WE | TH | FR | SA | SU |
|----|----|----|----|----|----|----|
| 29 | 30 | 31 | 1  | 2  | 3  | 4  |
| 5  | 6  | 7  | 8  | 9  | 10 | 11 |
| 12 | 13 | 14 | 15 | 16 | 17 | 18 |
| 19 | 20 | 21 | 22 | 23 | 24 | 25 |
| 26 | 27 | 28 | 29 | 30 | 31 | 1  |

## September

| MO | TU | WE | TH | FR | SA | SU |
|----|----|----|----|----|----|----|
| 26 | 27 | 28 | 29 | 30 | 31 | 1  |
| 2  | 3  | 4  | 5  | 6  | 7  | 8  |
| 9  | 10 | 11 | 12 | 13 | 14 | 15 |
| 16 | 17 | 18 | 19 | 20 | 21 | 22 |
| 23 | 24 | 25 | 26 | 27 | 28 | 29 |
| 30 | 1  | 2  | 3  | 4  | 5  | 6  |

## October

| MO | TU | WE | TH | FR | SA | SU |
|----|----|----|----|----|----|----|
| 30 | 1  | 2  | 3  | 4  | 5  | 6  |
| 7  | 8  | 9  | 10 | 11 | 12 | 13 |
| 14 | 15 | 16 | 17 | 18 | 19 | 20 |
| 21 | 22 | 23 | 24 | 25 | 26 | 27 |
| 28 | 29 | 30 | 31 | 1  | 2  | 3  |

## November

| MO | TU | WE | TH | FR | SA | SU |
|----|----|----|----|----|----|----|
| 28 | 29 | 30 | 31 | 1  | 2  | 3  |
| 4  | 5  | 6  | 7  | 8  | 9  | 10 |
| 11 | 12 | 13 | 14 | 15 | 16 | 17 |
| 18 | 19 | 20 | 21 | 22 | 23 | 24 |
| 25 | 26 | 27 | 28 | 29 | 30 | 1  |

## December

| MO | TU | WE | TH | FR | SA | SU |
|----|----|----|----|----|----|----|
| 25 | 26 | 27 | 28 | 29 | 30 | 1  |
| 2  | 3  | 4  | 5  | 6  | 7  | 8  |
| 9  | 10 | 11 | 12 | 13 | 14 | 15 |
| 16 | 17 | 18 | 19 | 20 | 21 | 22 |
| 23 | 24 | 25 | 26 | 27 | 28 | 29 |
| 30 | 31 | 1  | 2  | 3  | 4  | 5  |


## Our Distributors



## ARSLANLAR END. MALZ. SAN. ve DIŐ. TİC. LTD. ŐTİ.

### İSTANBUL - TÜRKİYE

 Kocasınan Merkez Mah. Sakıp Sabancı Cad. No:1 B-Blok  
Bahçellevler

 +90 212 445 05 47  
+90 552 443 05 46

 [info@arslanlarendustri.com](mailto:info@arslanlarendustri.com)  
[www.arslanlarendustri.com](http://www.arslanlarendustri.com)

### BAKÜ - AZERBAYCAN

 Ahmed Reçpli Küç. 1/23 M Plaza 5. Mertebe  
Bakı - Azerbaycan

 +994 10 520 61 61

 [satisbaku@arslanlarendustri.com](mailto:satisbaku@arslanlarendustri.com)  
[www.arslanlarendustri.com](http://www.arslanlarendustri.com)